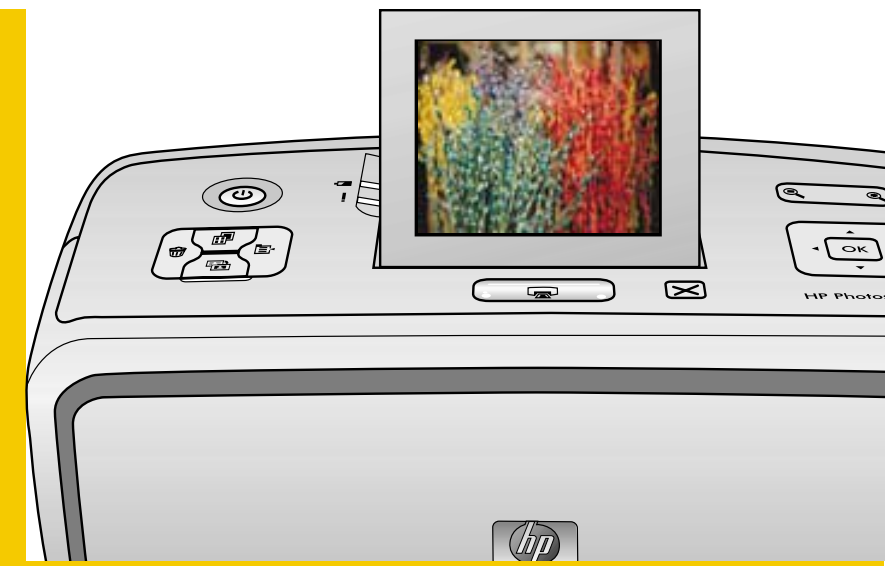


# Setup Guide

## HP Photosmart A610 series printer



EN

Q7110-90153

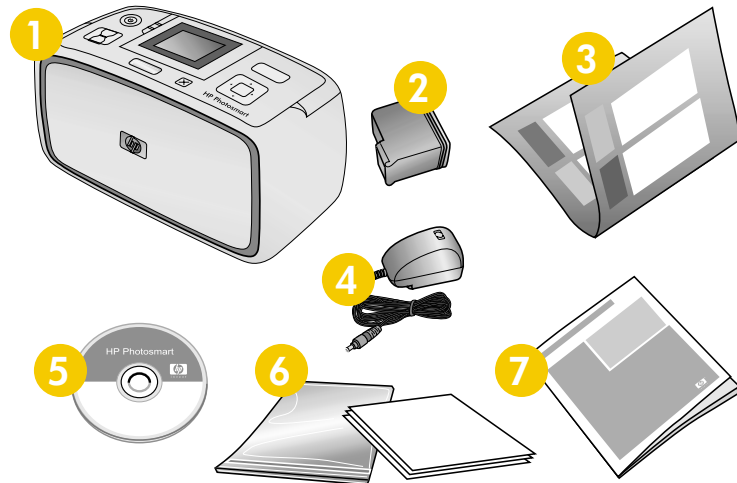
### 1 Unpack the printer

Remove the protective tape from inside and around the printer.

The box contains the following items:

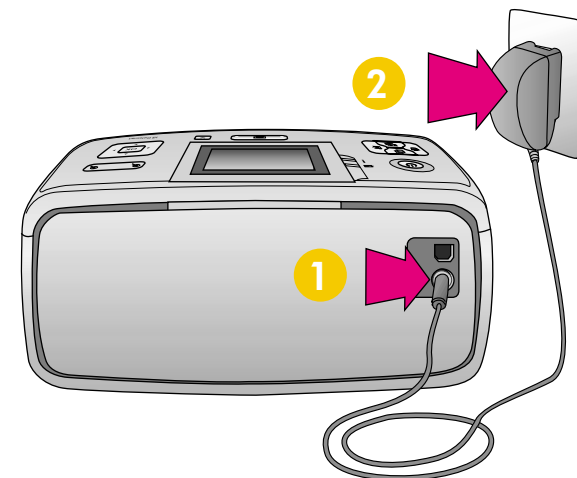
1. HP Photosmart A610 series printer
2. HP 110 Tri-color Inkjet print cartridge
3. Setup Guide (this poster)
4. Power supply
5. HP Photosmart software and electronic Help on CD
6. HP Advanced Photo Paper and resealable media bag
7. User Guide

**Note:** Contents may vary by country/region. Please check the packaging for the actual box contents.



### 2 Plug in the power cord

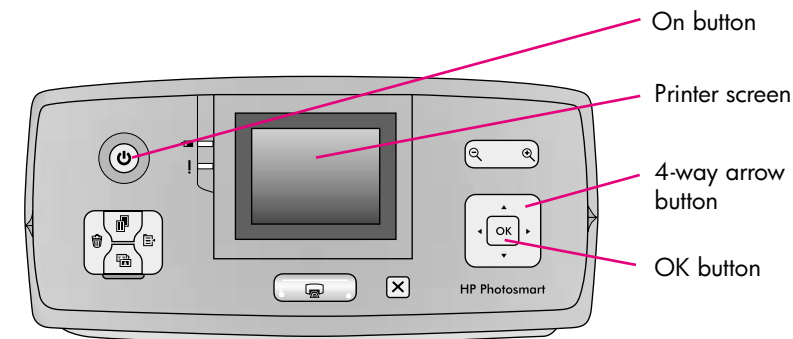
1. Connect the power cord to the back of the printer.
2. Plug the power cord into a working electrical outlet.



### 3 Turn on the printer

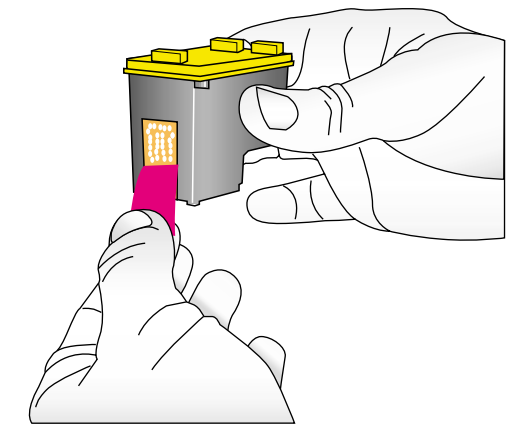
#### Set language and country

1. **Remove the protective film from the printer screen.**
2. Press **On** to turn on the printer.
3. When **Select Language** appears on the printer screen, press **▲** or **▼** to highlight your language. Press **OK**.
4. When **Set LCD language to (your language)** appears on the printer screen, press **▲** or **▼** to highlight **Yes**. Press **OK**.
5. When **Select country/region** appears on the printer screen, press **▲** or **▼** to highlight your country/region. Press **OK**.



### 4 Prepare the print cartridge

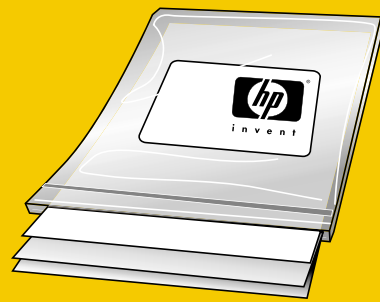
1. Open the print cartridge package.
2. Pull the **pink pull-tab** to remove the clear tape from the print cartridge.



Do not touch or remove the ink nozzles or the copper-colored contacts!



invent

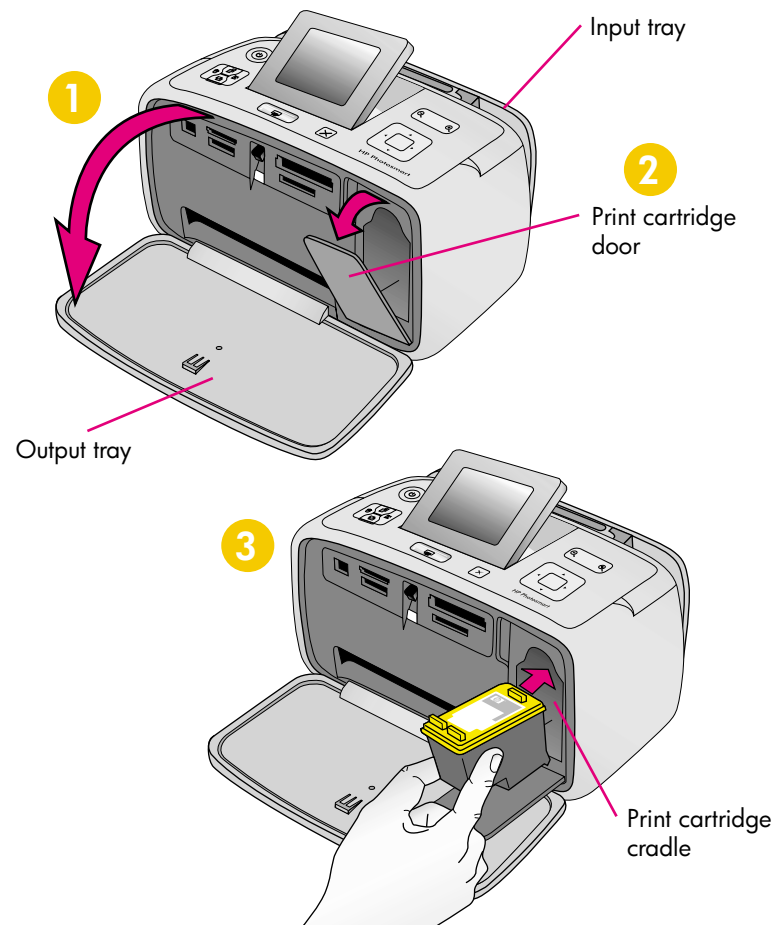


**Important:** Use **HP Advanced Photo paper** with this printer. It is especially designed to produce beautiful photos using the inks in your new printer. Other photo papers will produce inferior results.



## 5 Install the print cartridge

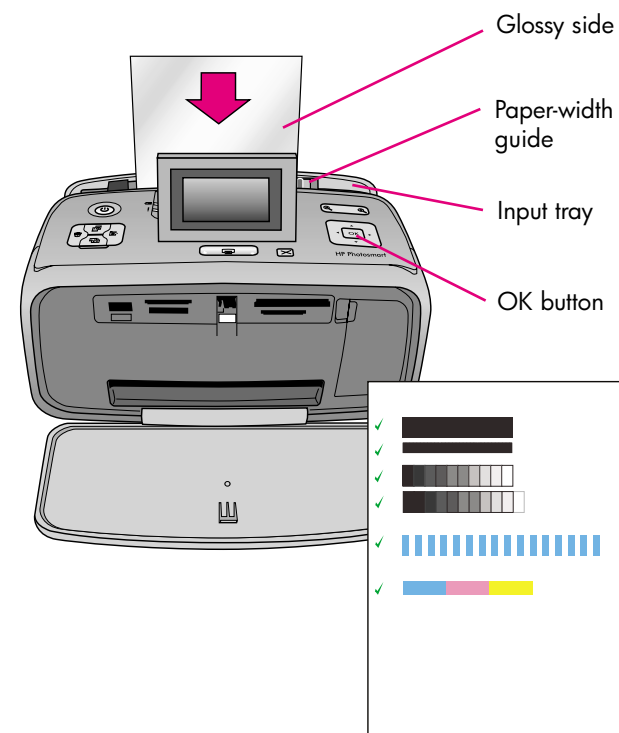
1. Open the output tray. The input tray opens and the printer screen pops up automatically.
2. Open the print cartridge door.
3. Insert the print cartridge into the print cartridge cradle with the label facing up and the copper-colored contacts facing the inside of the printer.
4. Push the print cartridge into the cradle until it snaps into place.
5. Close the print cartridge door.



## 6 Print an alignment page

Printing an alignment page ensures high print quality.

1. Place a few sheets of HP Advanced Photo paper (sample pack included) in the input tray with the glossy sides facing toward the front of the printer.
2. Slide the paper to the left side of the input tray.
3. Adjust the paper-width guide to fit close to the right edge of the paper without bending the paper.
4. Press **OK**. An alignment page prints on the first sheet of photo paper. Follow the instructions on the printer screen.

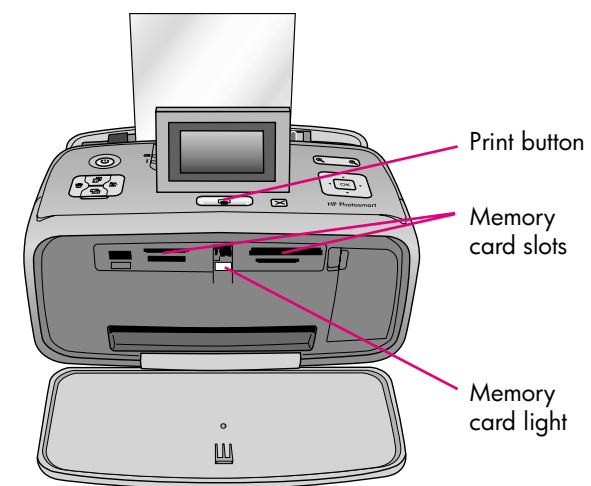


## 7 Print your first photo

1. Insert a memory card into the correct memory card slot.

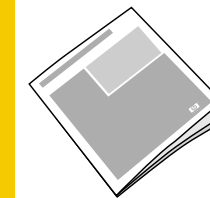
**Note:** The memory card will not insert all the way into the printer. When the memory card is inserted correctly, the memory card light flashes and then remains solid green.

2. Press **Print** to print your first photo.
3. Press **Print** to print your first photo.

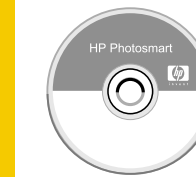


## Need more information?

For more information, see the following:



**HP Photosmart A610 series User Guide**



**Electronic Help**



**www.hp.com/support**

You can also call HP support at 1- 800- 474- 6836 (1- 800 HP invent).

If you want to use the printer with a computer, install the HP Photosmart software. See Appendix A in the User Guide for more information.



Printed in USA. 04/06. Printed on recycled paper © 2006. Hewlett-Packard Development Company, L.P.

